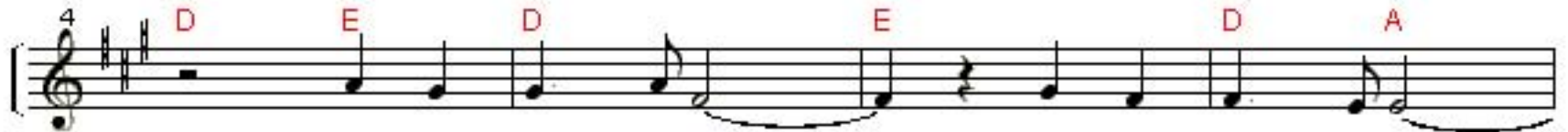
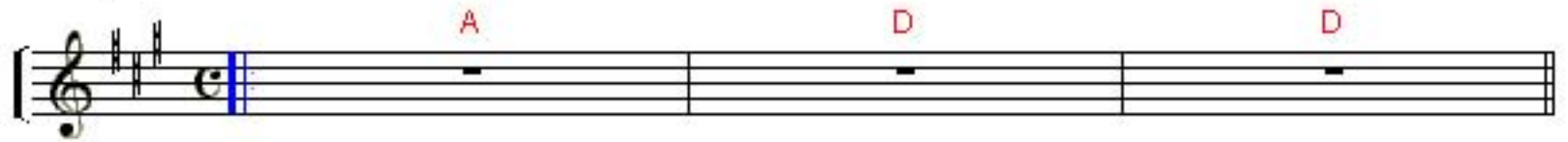


Send A Revival

Tempo = 110

by Sharon Morrison and Tom Lascoe



1. We are wait - ing in Your pres - ence,
2. We are thir - sty for Your wa - ter,



We are reach - ing out for more.
We are wea - ry for Your rest.



Op - en hea - ven, Ho - ly Spir - it,
We sur - ren - der ev - 'ry - thing O Lord,



Rain down Your fire, Like You've done be - fore. _____
Re - veal Your love, And Your right - eous - ness. _____



Send down Your fire and rain, Cleanse us from ev' - ry



stain. Lord make us clean and white, And flood us with Your

28 **A** **D \flat** **F \sharp m**
light. Call forth the church to ride, Make us a spot-less

32 **Bm** **E sus**
bride. Ho - ly Spir - it, Send a Re - vi - - -

36 **E** **E** **F sus** **F**
1 2
val! val! Re - vi - - - val!

40 **B \flat** **E \flat** **E \flat** **E \flat** **F**
3. We are

44 **E \flat** **F** **E \flat** **B \flat**
pray - ing for Your riv - ers, Streams of

48 **E \flat** **F** **B \flat**
mer - cy to flow free. Send Your

52 **E \flat** **F** **E \flat** **B \flat**
glo - ry, Ho - ly Spir - it, Fill up our

56 **Cm** **F sus**
hearts, Like a migh - ty seal

59 **F** **CHORUS** **E \flat** **B \flat** **F**

Send down Your fire and rain, Cleanse us from ev' - ry

Detailed description: This musical staff contains measures 59 through 62. It begins with a treble clef, a key signature of two flats (B-flat and E-flat), and a common time signature. Measure 59 starts with a quarter rest, followed by a quarter note G4. Measure 60 has a quarter rest, a quarter note B-flat4, and a quarter note G4. Measure 61 has a quarter rest, a quarter note E-flat4, and a quarter note G4. Measure 62 has a quarter rest, a quarter note F4, and a quarter note G4. Chord symbols are placed above the staff: F above measure 59, E-flat above measure 60, B-flat above measure 61, and F above measure 62.

63 **B \flat** **E \flat** **B \flat** **F**

stain. Lord make us clean and white, And flood us with Your

Detailed description: This musical staff contains measures 63 through 66. It continues with the same key signature and time signature. Measure 63 has a quarter rest, a quarter note G4, and a quarter note B-flat4. Measure 64 has a quarter rest, a quarter note E-flat4, and a quarter note G4. Measure 65 has a quarter rest, a quarter note B-flat4, and a quarter note G4. Measure 66 has a quarter rest, a quarter note F4, and a quarter note G4. Chord symbols are placed above the staff: B-flat above measure 63, E-flat above measure 64, B-flat above measure 65, and F above measure 66.

67 **B \flat** **D** **Gm**

light. Call forth the church to ride, Make us a spot - less

Detailed description: This musical staff contains measures 67 through 70. Measure 67 has a quarter rest, a quarter note G4, and a quarter note B-flat4. Measure 68 has a quarter rest, a quarter note D5, and a quarter note G4. Measure 69 has a quarter rest, a quarter note E-flat4, and a quarter note G4. Measure 70 has a quarter rest, a quarter note Gm, and a quarter note G4. Chord symbols are placed above the staff: B-flat above measure 67, D above measure 68, and Gm above measure 70.

71 **Cm** **Fsus**

bride. Ho - ly Spir - it, Send a Re - vi - - - -

Detailed description: This musical staff contains measures 71 through 74. Measure 71 has a quarter rest, a quarter note G4, and a quarter note B-flat4. Measure 72 has a quarter rest, a quarter note C5, and a quarter note B-flat4. Measure 73 has a quarter rest, a quarter note B-flat4, and a quarter note G4. Measure 74 has a quarter rest, a quarter note F4, and a quarter note G4. Chord symbols are placed above the staff: Cm above measure 72 and Fsus above measure 74.

75 **F** **B \flat** **E \flat** **B \flat** **B \flat** **B \flat**

val!

Detailed description: This musical staff contains measures 75 through 78. Measure 75 has a quarter rest, a quarter note G4, and a quarter note B-flat4. Measure 76 has a quarter rest, a quarter note B-flat4, and a quarter note G4. Measure 77 has a quarter rest, a quarter note E-flat4, and a quarter note G4. Measure 78 has a quarter rest, a quarter note B-flat4, and a quarter note G4. Chord symbols are placed above the staff: F above measure 75, B-flat above measure 76, E-flat above measure 77, and B-flat above measure 78.