

"God is our refuge and strength, A very present help in trouble."..... Psalm 46:1-2

God Is My Refuge And My Strength

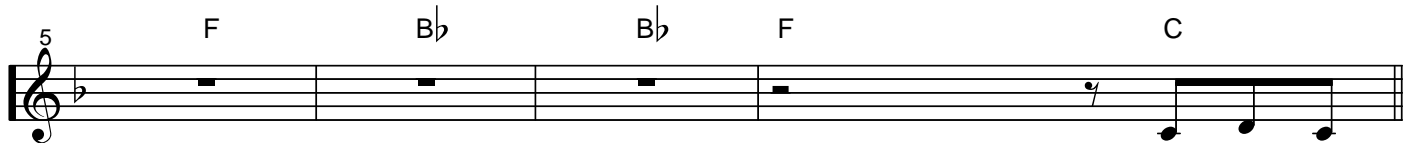
CCLI# 2961053

Tom Lascoe (from Psalm 46:1-2)

Tempo = 110

F B \flat B \flat F C

(Melody)



God is my
Alternative verse: (You are my)

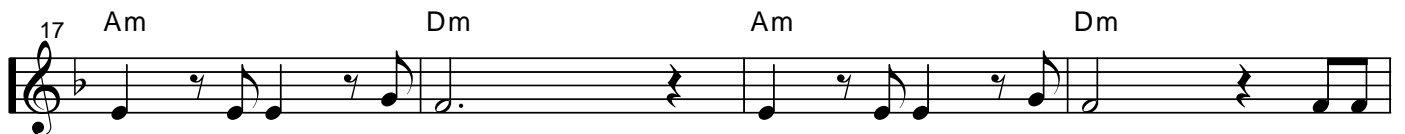


re-fuge and my strength, A ve-ry pres - ent help In time of need. God is my
(You are my)



re-fuge and my strength: I will not fear, For You are right here with me. So,

CHORUS



I am not a - fraid, I am not dis-mayed; Though the



earth be re-mov-ed, And the moun-tains are car - ried to the sea!

Copyright ©1999 Tom Lascoe Music

www.tomlascoemusic.com

CCLI# 2961053

25 C F B \flat F

I will not fear, I will not fear!

29 C Dm Am B \flat

You are my strength and my shield, And I praise You,

33 C sus 1 C 2 C D sus

Lord!

37 D G C C

41 G D G C C

45 G D G C C

God is my re - fuge and my strength, A ve - ry pres - ent help In
(You are my)

49 C D G C C
 time_of need. God is my re-fuge and my strength: I will not fear, For You are
 (You are my)

53 C D Bm Em Bm
 right here with me. So, I am not a - fraid, I am not dis-

57 Em Am Am C
 mayed; Though the earth be re-moved, And the moun-tains are car - ried to the

61 D D G C
 sea! I will not fear, I will not

65 G D Em Bm
 fear! You are my strength and my shield, And I

69 C Dsus D G
 praise You, Lord! I praise You, Lord!

73 C G G